

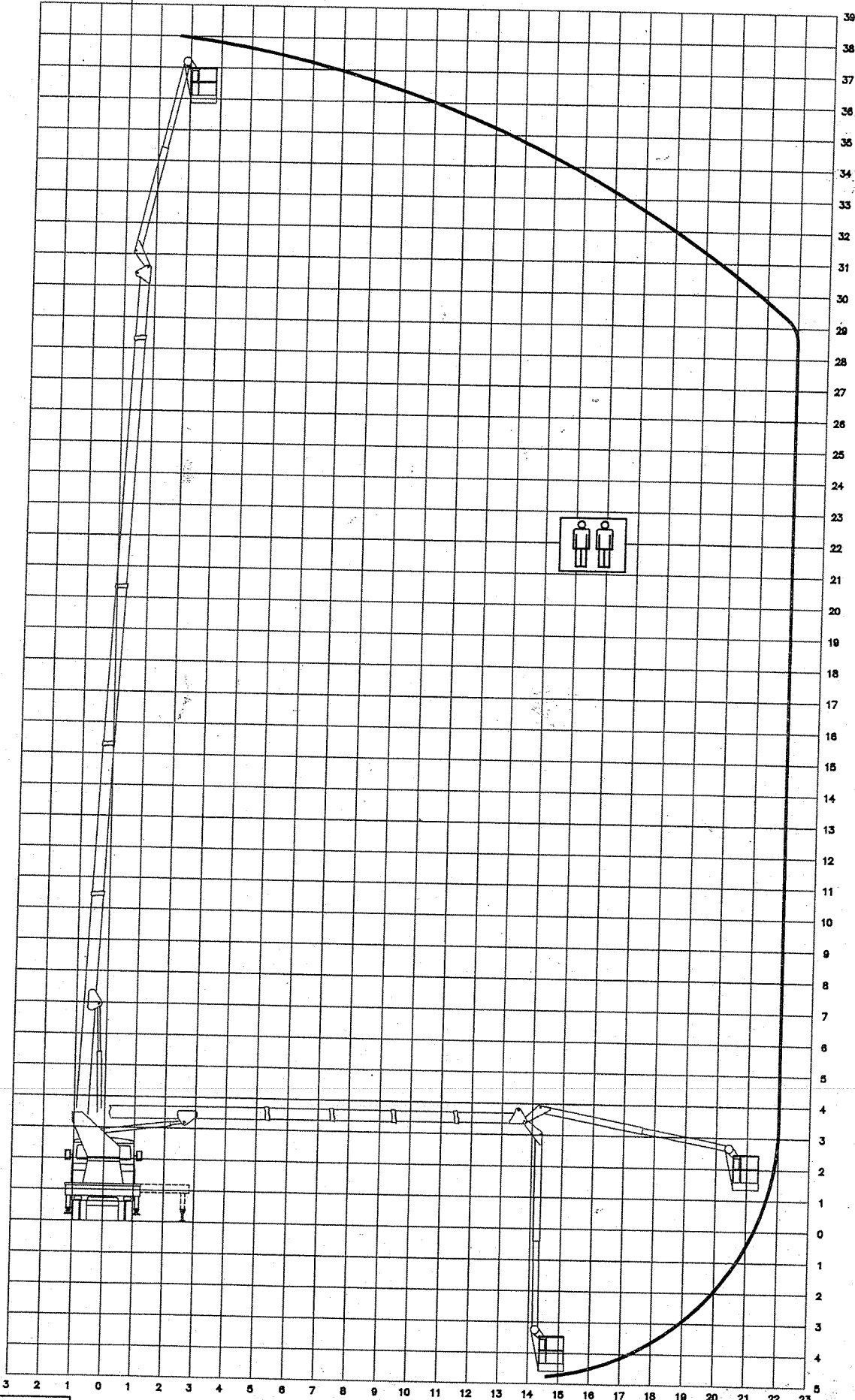
TARGA: BG 948323

Palazzani
Palazzani Industrie

PALIFT 38 TJ

360°

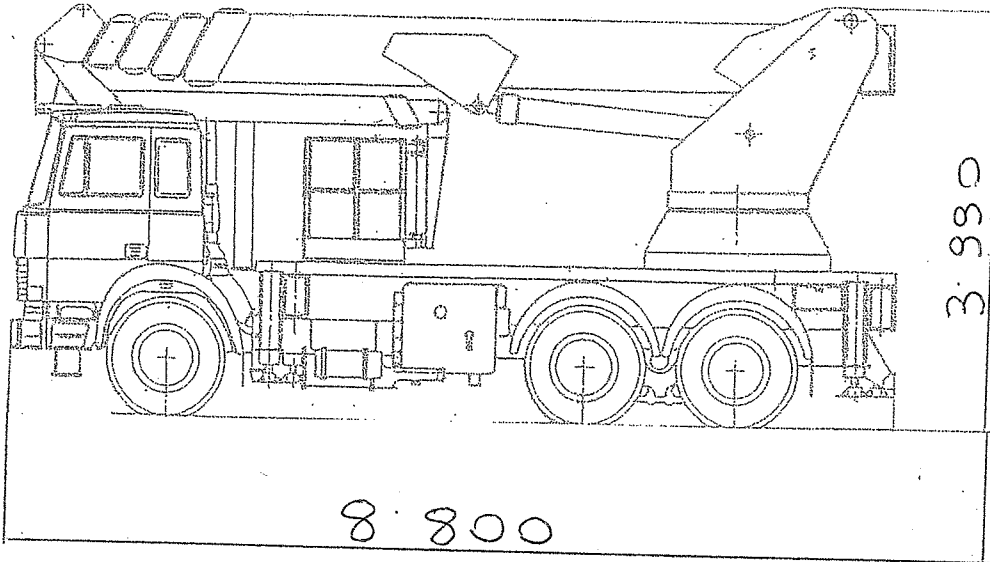
LETTRO & LIFT S.R.L.
Via Mejo Voltolina, 31
25124 BRESCIA (BS)
Tel. 030.8901252 - Fax 030.800069
E-mail: Fisco e Part. I.V.A.: 02902300983



Dis. 9517

OK Verificato 5/7/2007 - Cesto girato 90°
e allargato MT 22 filo Cesto

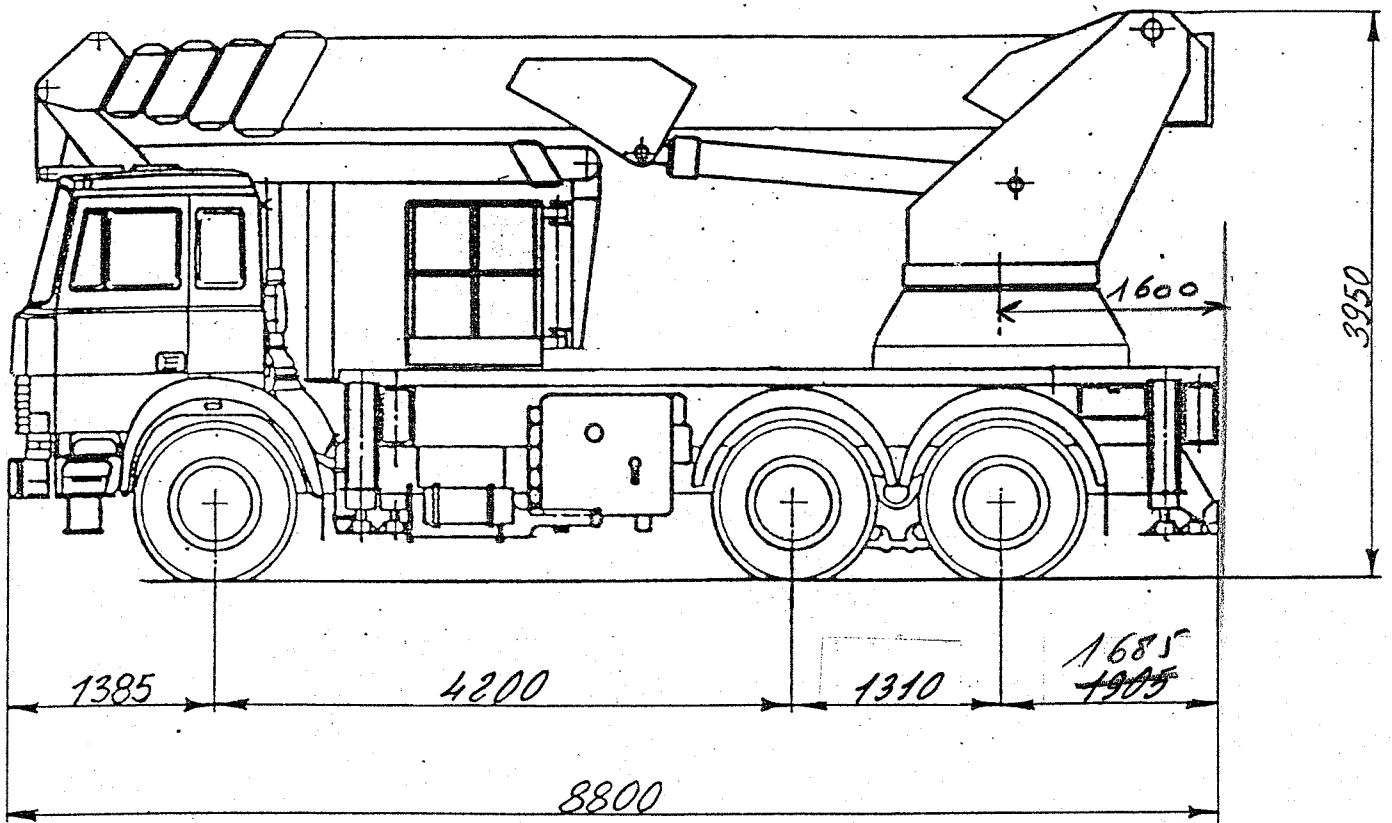
PESO 240 Q.

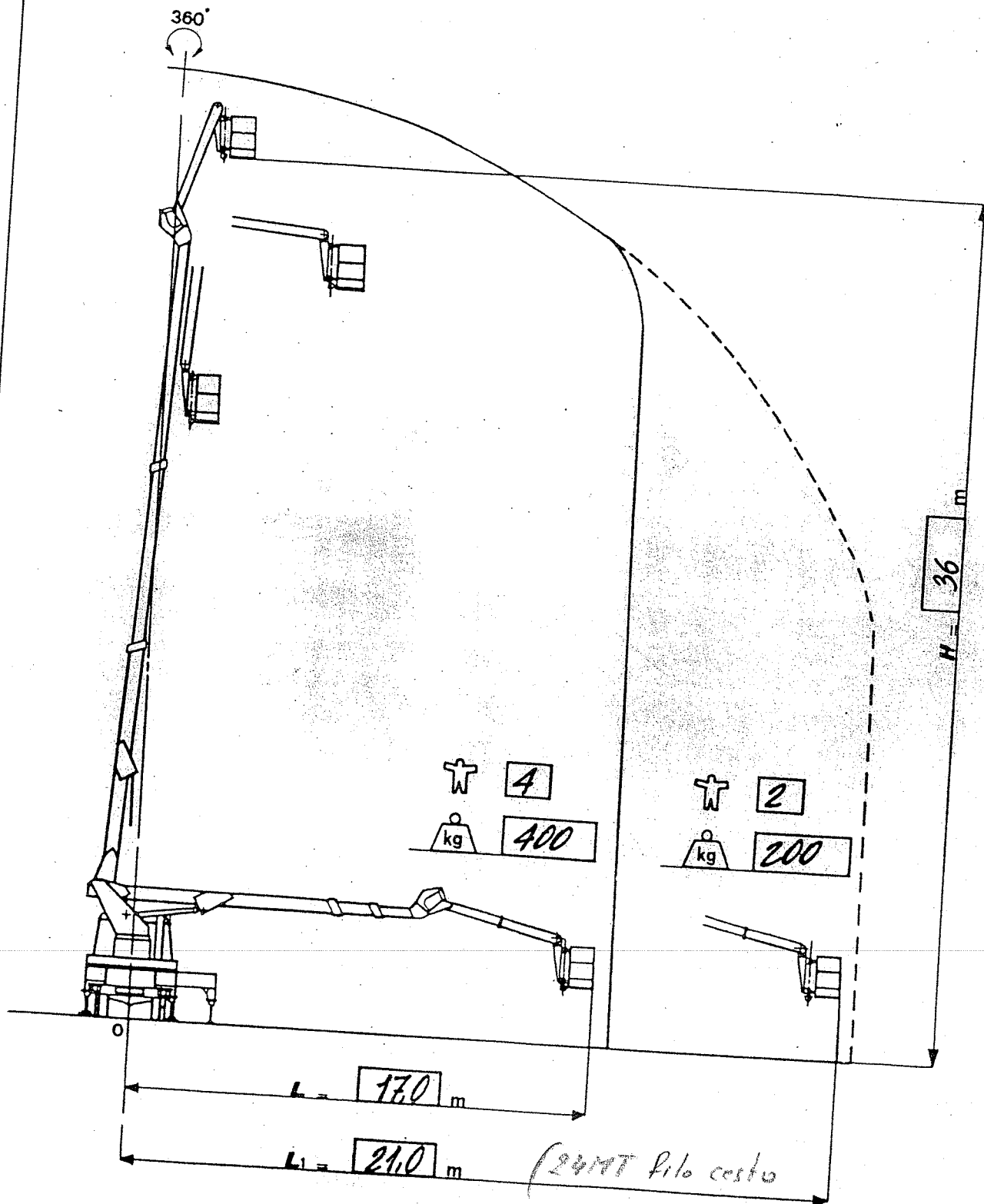


LARGHEZZA 2.500 - TRAVERSE APERTE + 3.200 = 57 mt

x Lavoro solo su un fianco - TRAVERSA APERTA + 1.600 = 4,10 mt

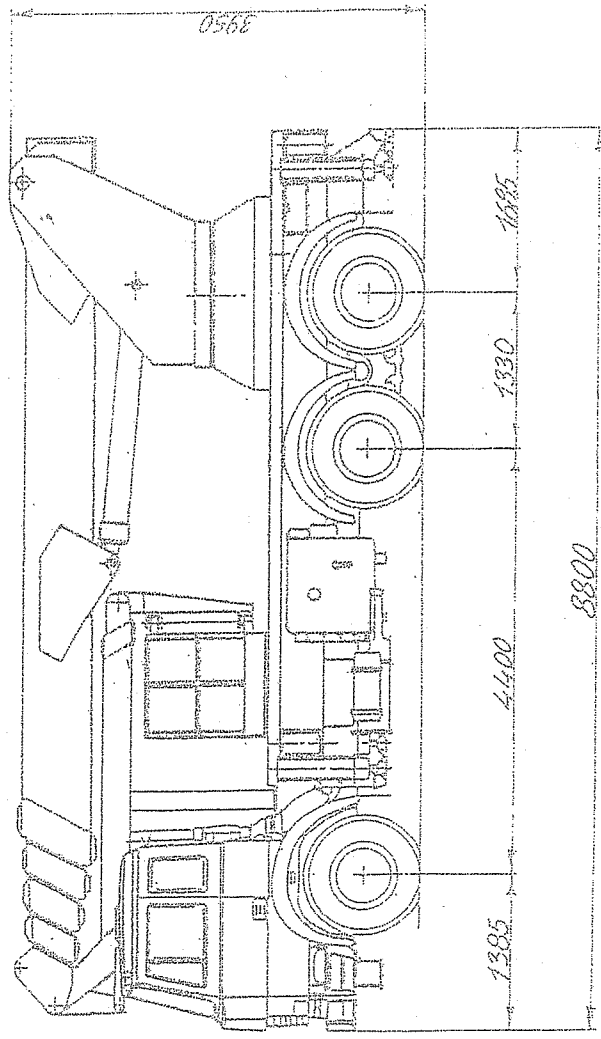
ELETTR & LIFT S.R.L.
Via Luigi Einaudi n. 26
25121 Brescia (Bs)
Tel. 030-802039 - Fax 030-8905645
C. Fisc. e Part. I.V.A.: 02902300983





PALIFT 38 TJ

PALIFT



PALIFT 38 TJ

Palift 38 TJ

